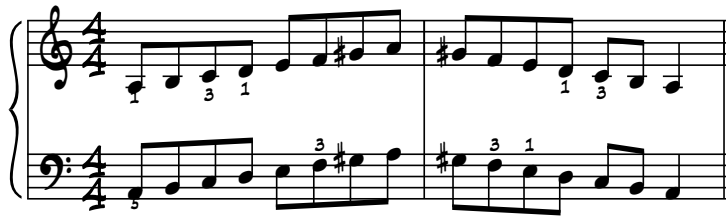
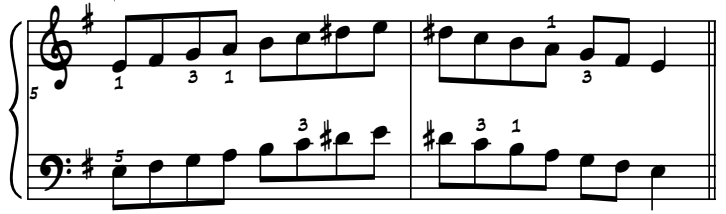


ESCALAS MENORES HARMÔNICAS

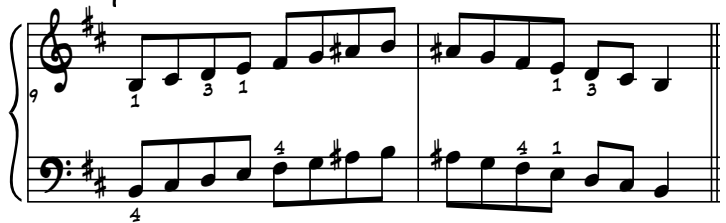
LÂ MENOR



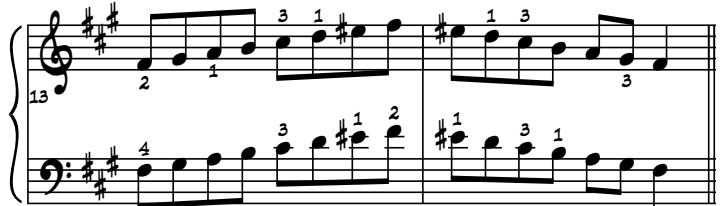
MI MENOR



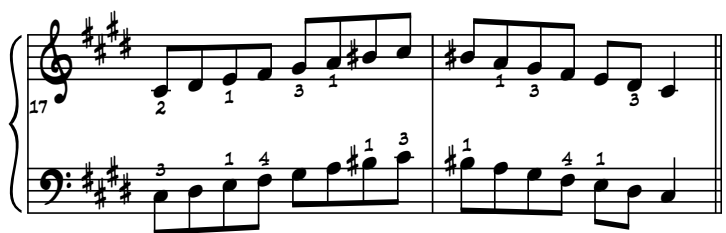
SI MENOR



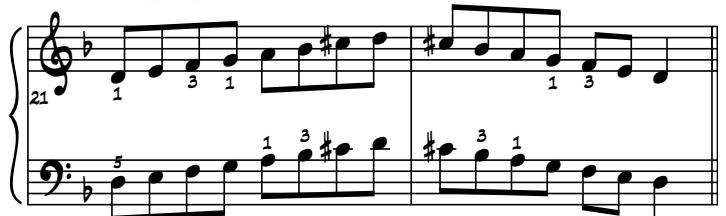
FÂ# MENOR



DÔ# MENOR



RÊ MENOR



SOL MENOR

Handwritten musical score for the Sol Menor scale, measures 25-26. The key signature has one flat (Bb). The right hand (treble clef) starts on G4 and plays an ascending eighth-note scale: G4, A4, Bb4, C5, D5, E5, F#5, G5. The left hand (bass clef) starts on G3 and plays an ascending eighth-note scale: G3, A3, Bb3, C4, D4, E4, F#4, G4. Fingering is indicated by numbers 1-5.

DÓ MENOR

Handwritten musical score for the Dó Menor scale, measures 29-30. The key signature has two flats (Bb, Eb). The right hand (treble clef) starts on D4 and plays an ascending eighth-note scale: D4, E4, F4, G4, Ab4, Bb4, C5, D5. The left hand (bass clef) starts on D3 and plays an ascending eighth-note scale: D3, E3, F3, G3, Ab3, Bb3, C4, D4. Fingering is indicated by numbers 1-5.

FÁ MENOR

Handwritten musical score for the Fá Menor scale, measures 33-34. The key signature has three flats (Bb, Eb, Ab). The right hand (treble clef) starts on F4 and plays an ascending eighth-note scale: F4, G4, Ab4, Bb4, C5, D5, E5, F#5. The left hand (bass clef) starts on F3 and plays an ascending eighth-note scale: F3, G3, Ab3, Bb3, C4, D4, E4, F#4. Fingering is indicated by numbers 1-5.

Sib MENOR

Handwritten musical score for the Sib Menor scale, measures 37-38. The key signature has four flats (Bb, Eb, Ab, Db). The right hand (treble clef) starts on F#4 and plays an ascending eighth-note scale: F#4, G4, Ab4, Bb4, C5, D5, E5, F#5. The left hand (bass clef) starts on F#3 and plays an ascending eighth-note scale: F#3, G3, Ab3, Bb3, C4, D4, E4, F#4. Fingering is indicated by numbers 1-5.

Mib MENOR

Handwritten musical score for the Mib Menor scale, measures 41-42. The key signature has five flats (Bb, Eb, Ab, Db, Gb). The right hand (treble clef) starts on G4 and plays an ascending eighth-note scale: G4, Ab4, Bb4, C5, D5, E5, F#5, G5. The left hand (bass clef) starts on G3 and plays an ascending eighth-note scale: G3, Ab3, Bb3, C4, D4, E4, F#4, G4. Fingering is indicated by numbers 1-5.

LÁb MENOR

Handwritten musical score for the Lá Menor scale, measures 45-46. The key signature has six flats (Bb, Eb, Ab, Db, Gb, Cb). The right hand (treble clef) starts on A4 and plays an ascending eighth-note scale: A4, Bb4, C5, D5, E5, F#5, G5, Ab5. The left hand (bass clef) starts on A3 and plays an ascending eighth-note scale: A3, Bb3, C4, D4, E4, F#4, G4, Ab4. Fingering is indicated by numbers 1-5.